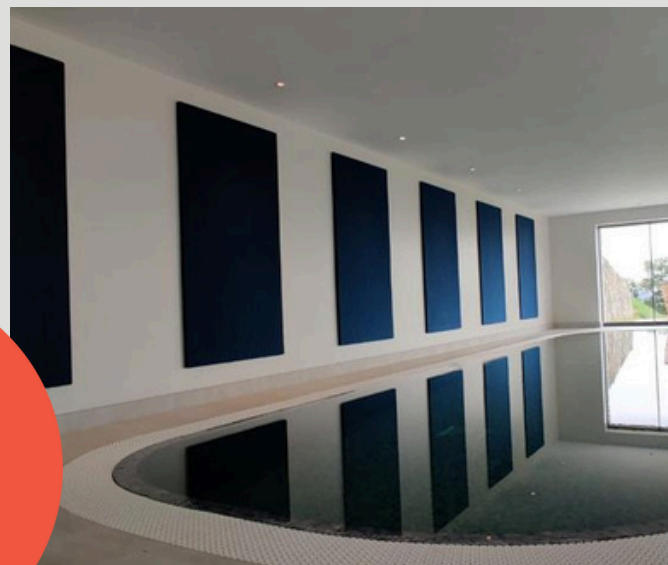


SilentWall

Fabric Wrapped Acoustic Panels



About SilentWall

High performing sound absorbing panels designed to control reverberation and absorb unwanted noise.

Available in custom sizes, endless fabric choices



01732 928883



sales@silent-space.co.uk



Paris Farm,
Maidstone Road,
Hadlow, TN11 0LT

Product Specifications



Fire

SilentRaft core has been tested and offers Class O fire rating to BS476: Part 6. Reaction to fire classification: B-s1,d0 in accordance with EN 13501 Fabric facing complies with Class 1 to BS476: Part 7. Class O fabrics can be supplied on request.



Acoustic Performance

SilentWall 25mm | Class C | NRC 0.80
SilentWall 40mm | Class A | NRC 0.95
BS EN ISO 345:2003



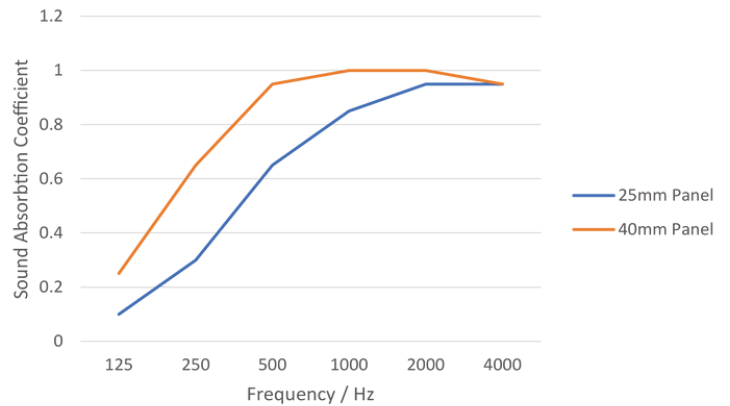
Cleaning

Refer to the chosen fabric cleaning instructions for detailed guides. Basic stains can be wiped off or removed using upholstery cleaner.



Weight

SilentWall 25mm weigh 3.5kg/m²
SilentWall 40mm weighs 4.5kg/m²



SilentWall has been tested for sports halls, games and multi-purpose use. Tested for safety against ball throwing and certified to DIN 18032-3: 1997-04

Product Dimensions

SilentWall is available in several sizes, multiple shapes and can be custom made as per your requirements. For custom requests, get in contact with our sales team. Our standard sizes are below. Tolerance is +/- 3mm on all sizes.

1200 x 600 x 25 (mm)
1200 x 900 x 25 (mm)
1200 x 1200 x 25 (mm)
1200 x 1500 x 25 (mm)
1200 x 1800 x 25 (mm)
1200 x 2100 x 25 (mm)
1200 x 2400 x 25 (mm)
600 x 2400 x 25 (mm)
Ø 800 x 25 (mm)
Ø 1200 x 25 (mm)

1200 x 600 x 40 (mm)
1200 x 900 x 40 (mm)
1200 x 1200 x 40 (mm)
1200 x 1500 x 40 (mm)
1200 x 1800 x 40 (mm)
1200 x 2100 x 40 (mm)
1200 x 2400 x 40 (mm)
600 x 2400 x 40 (mm)
Ø 800 x 40 (mm)
Ø 1200 x 40 (mm)



01732 928883



sales@silent-space.co.uk

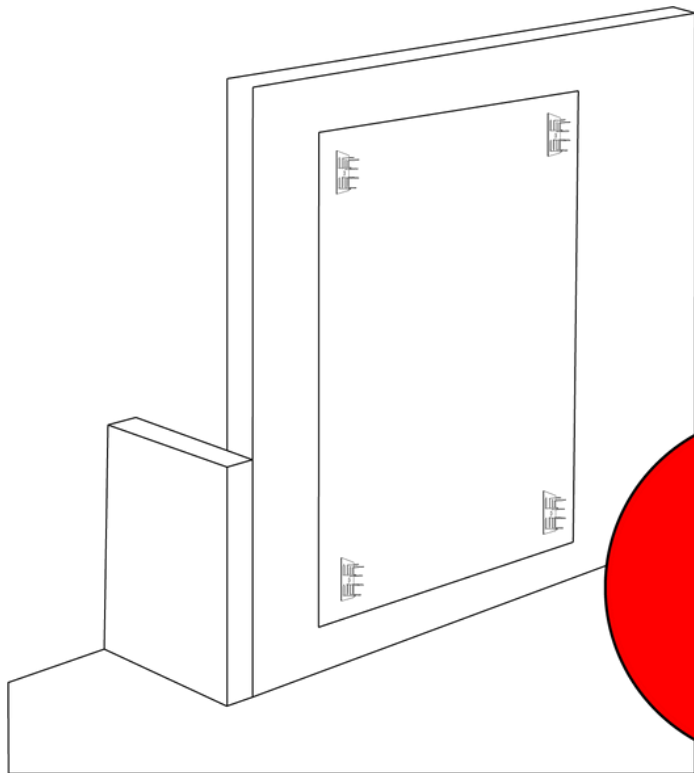


Paris Farm,
Maidstone Road,
Hadlow, TN11 0LT

Installation

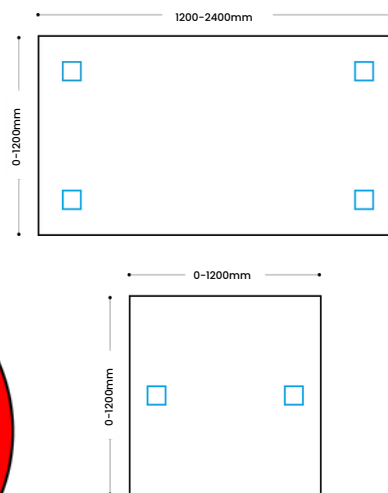
WALL SPIKE & ADHESIVE

Make certain that every wall surface where the panel will be affixed is clean and dry. Panels can be secured to various surfaces, such as concrete, drywall, and masonry, as long as they are sturdy. Any wallpaper should be removed, while glossy paint should be roughened to ensure the best adhesion. For emulsion paint, use a rigid brush to rough up.



Step 1

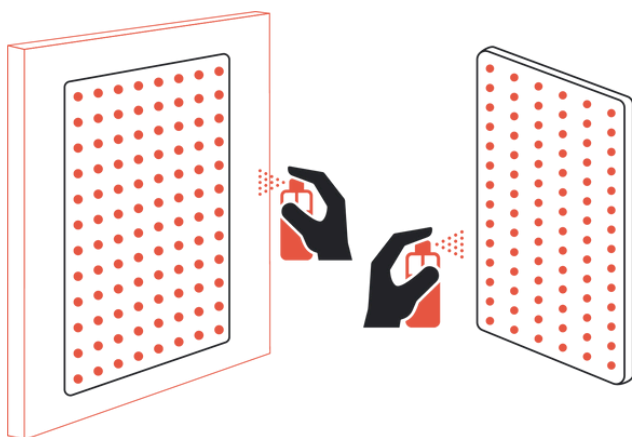
Lightly trace the panel edges onto the desired installation area. Then suitably fix the appropriate number of impaling wall spikes using screws for your substrate. Note, screws will not be provided.



*The appropriate number of spikes will be included with your panels

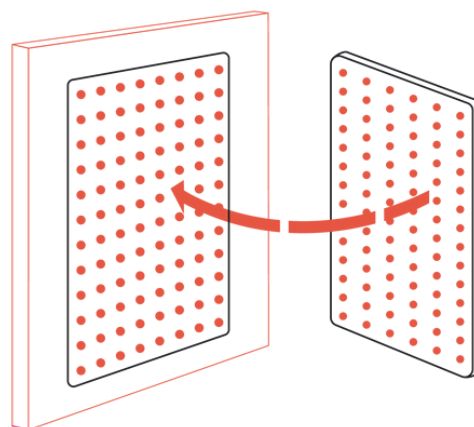
Step 2

Spray contact adhesive onto both the installation surface and the panel in opposite directions, to create an intertwining weave of adhesive. Be sure to spray over the wall spikes. Adhesive should be applied to 100% off both surfaces



Step 3

Wait 2-5 minutes for the adhesive to "flash off", then carefully align the panel to the marked area and push gently onto the wall spikes. Once happy with the positioning on the wall, press firmly to ensure full contact has been made with the opposing surface.



01732 928883



sales@silent-space.co.uk



Paris Farm,
Maidstone Road,
Hadlow, TN11 0LT

Installation

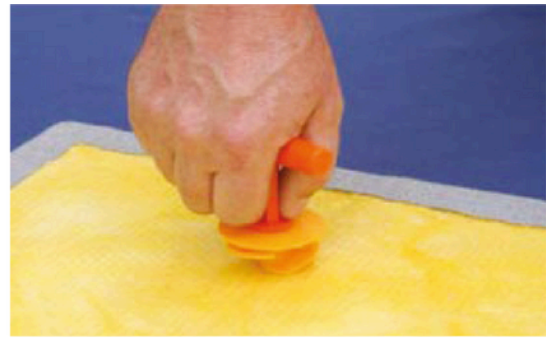
ROTOFAST SNAP-ON ANCHORS

Perfect for installations where panels need to be mounted securely and adhesive is not preferable The Rotofast Snap-On Anchor locks the panel onto any flat surface. Simply twist the anchor into the panel using the included tool, and attach the corresponding locking pins to the wall or ceiling. The panel clicks and locks onto these pins, providing safe and secure installation.



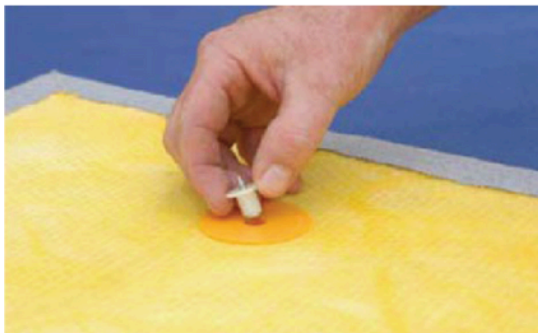
Rotofast Snap-On parts

Everything you need to install your panels in 5 easy steps.



Step 1

Screw anchors into the back of the panel using the provided driver tool. Recommended between 4 and 6 anchors depending on size.



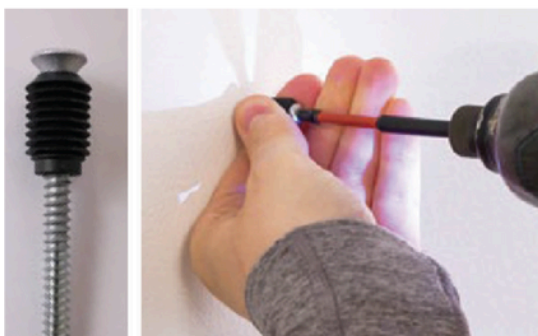
Step 2

Insert provided marking plugs into the anchors



Step 3

Push panel firmly against the wall to mark drilling points for anchor locations. Ensure panel is level when adding the marks.



Step 4

Screw ratchets to wall at marked locations. Flat end of the ratchet faces the wall, curved end facing out. Wall plugs are recommended if going directly into plasterboard



Step 5

Firmly push panel onto ratchets to complete the installation



01732 928883



sales@silent-space.co.uk



Paris Farm,
Maidstone Road,
Hadlow, TN11 0LT

Fabric Colours

CAMIRA ERA

Era is a subtle, two tone polyester fabric containing stretch in both directions for ease of upholstery. The baby herringbone weave offers an understated contemporary texture while its colouring technique provides close up intrigue. The palette incorporates playful brights and sophisticated muted tones.



CSE01 Futurist



CSE02 Generation



CSE03 Lifetime



CSE05 Span



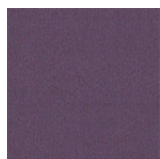
CSE06 Cycle



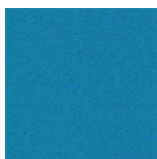
CSE07 Period



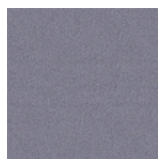
CSE08 Chapter



CSE09 Prime



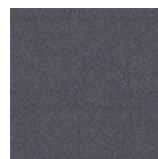
CSE10 Everlasting



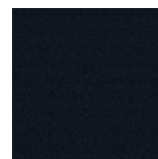
CSE11 Forecasting



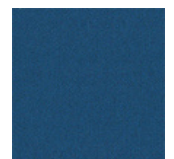
CSE12 Perennial



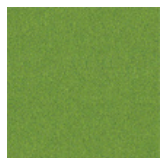
CSE13 Present



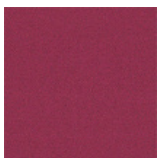
CSE14 Forward



CSE15 Stage



CSE16 Timelapse



CSE17 Phase



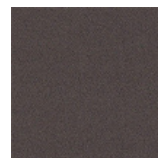
CSE18 Event



CSE19 Calendar



CSE20 Aeon



CSE21 History



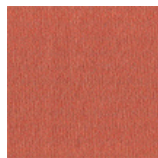
CSE23 Occurence



CSE24 Date



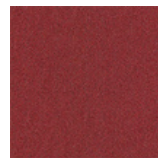
CSE25 Sequence



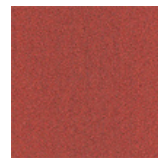
CSE26 Turn



CSE27 Measure



CSE28 Extent



CSE29 Experience



CSE30 Transition



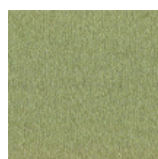
CSE31 Splitsecond



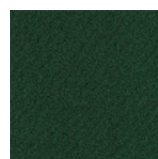
CSE32 Occasion



CSE33 Analogue



CSE34 Endurance



CSE35 Signature



CSE36 Notation



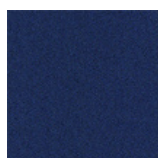
CSE37 Rest



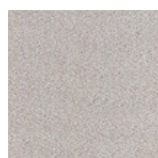
CSE38 Allowance



CSE39 Youth



CSE40 Maturity



CSE41 Quota



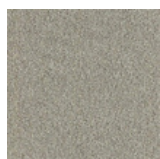
CSE42 Range



CSE43 Late



CSE44 Elapse



CSE45 Prompt



CSE46 Memo



01732 928883



sales@silent-space.co.uk

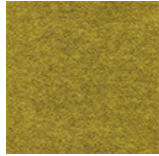


Paris Farm,
Maidstone Road,
Hadlow, TN11 0LT

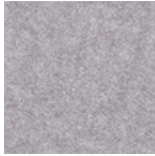
Fabric Colours

CAMIRA SONUS

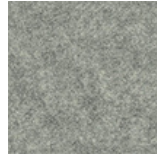
With a fibre felted finish and an appealing mélange effect, the Sonus range is the ideal accompaniment for a modern interior. An acoustically transparent fabric for use on panels, Sonus is the perfect enhancement for a range of vertical surfaces. The complementary Sonus Etch is available in two understated grey shades, bringing added depth with its subtle embossed lattice design.



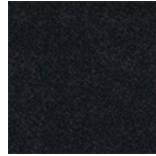
FHR01 Song



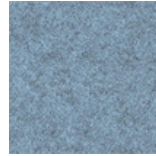
FHR02 Voice



FHR03 Beat



FHR05 Amp



FHR06 Audio



FHR07 Melody



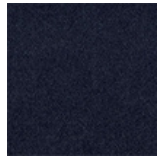
FHR09 Pop



FHR12 Acoustic



FHR13 Soul



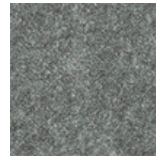
FHR16 Verse



FHR17 Chorus



FHU08 Vocal



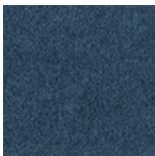
FHU04 Music



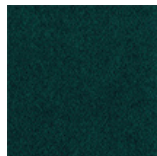
FHU10 Chime



FHU11 Rap



FHU14 Classical



FHU15 Lyric

Fabric Suppliers

camira

VESCOM

Gabriel®

ENDLESS FABRIC OPTIONS

Thanks to our access to various fabric suppliers, SilentWall can be wrapped in an extensive variety of stunning fabrics from brands such as Camira, Vescom and Gabriel. Whether you are matching existing decor or designing a space completely from the ground up, we can offer a suitable solution.

Most ranges of fabrics from these suppliers are suitable for use on SilentWall. Camira Sonus and Era are our standard options, please contact us for more.



01732 928883



sales@silent-space.co.uk



Paris Farm,
Maidstone Road,
Hadlow, TN11 0LT